



# DRILLING LOG



FROM : (m) 810

TO : (m) 4550

SCALE : 1/ 500

Well Name : WKF W8A

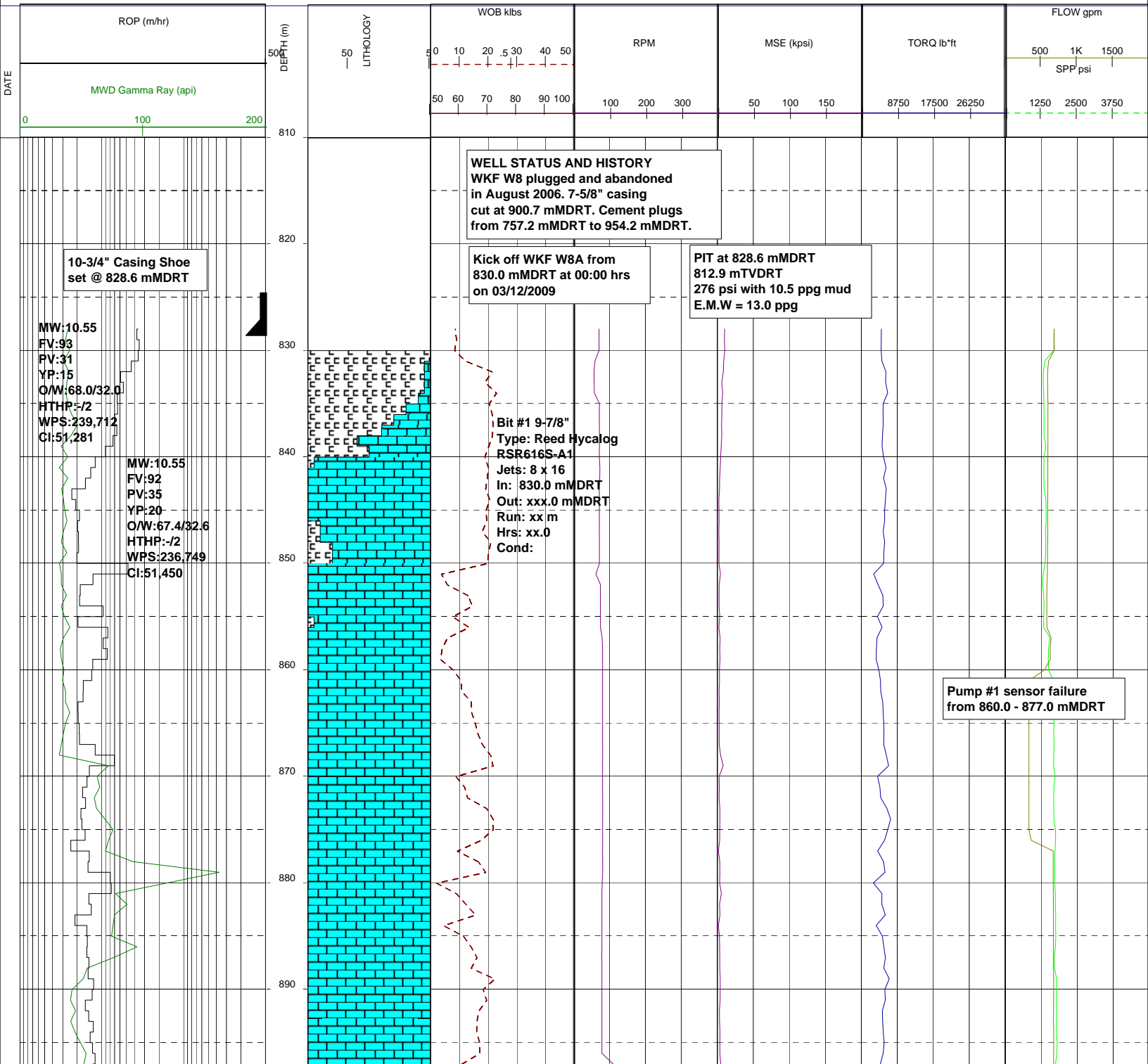
Company : ESSO AUSTRALIA PTY LTD

Country : AUSTRALIA

RT-MSL (m) : 41.70

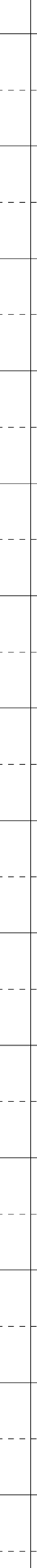
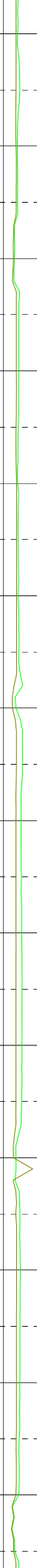
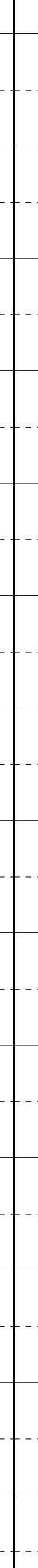
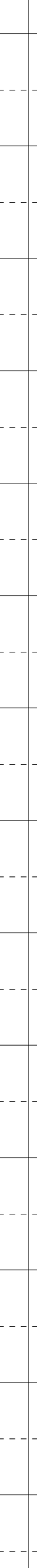
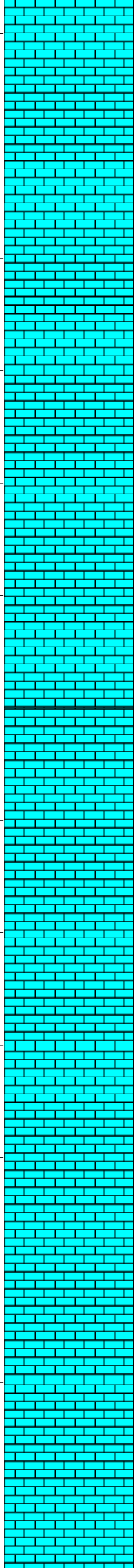
RT-SEABED (m): 118.70

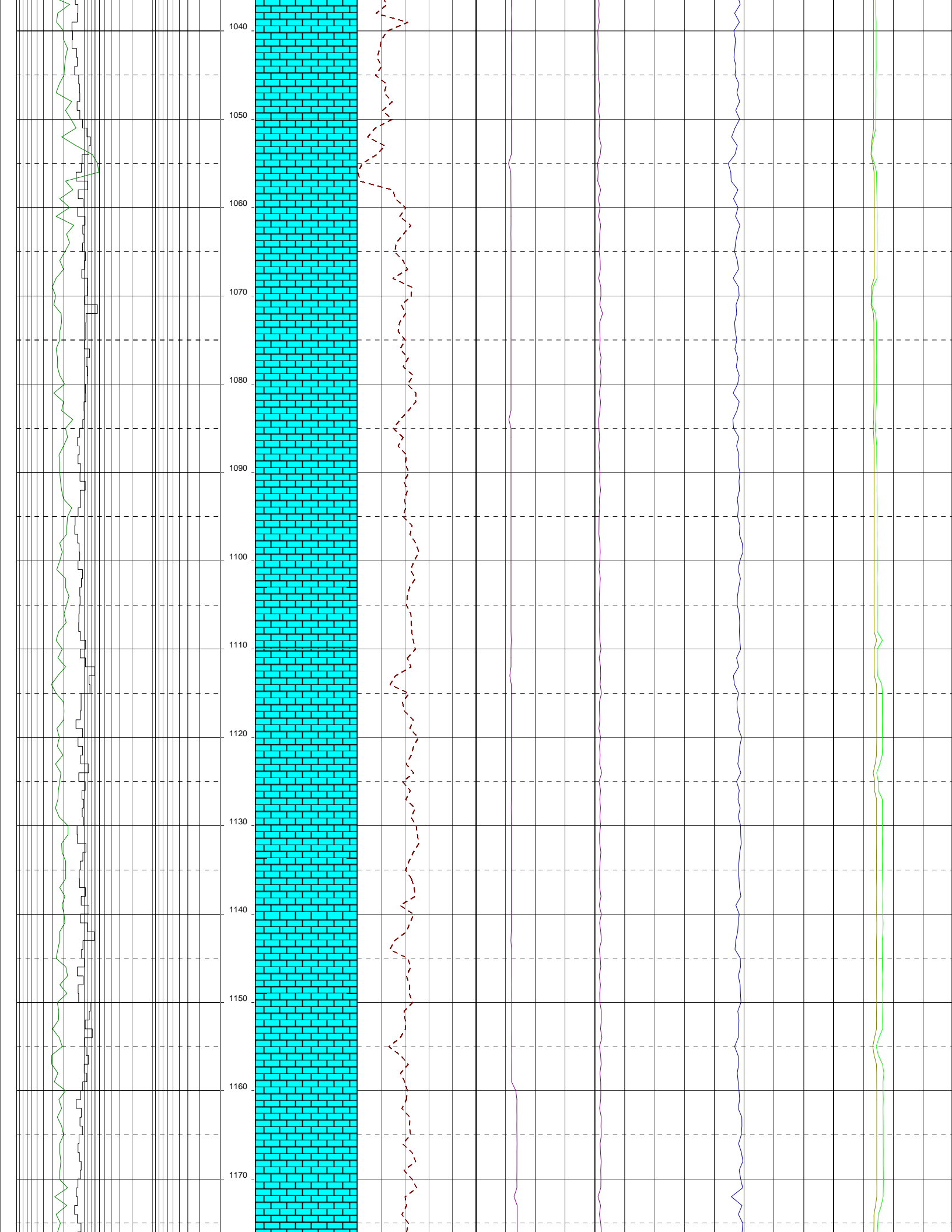
Generated by geoNEXT Package



MW:10.55  
FV:92  
PV:35  
YP:20  
O/W:67.4/32.6  
HTHP:-/2  
WPS:236,749  
CI:51,450

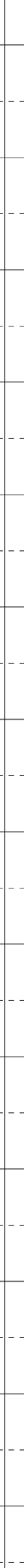
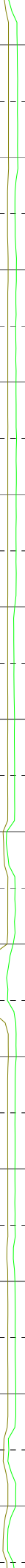
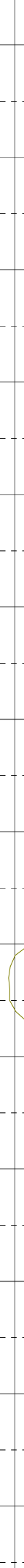
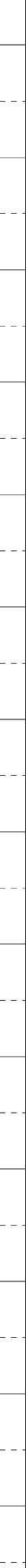
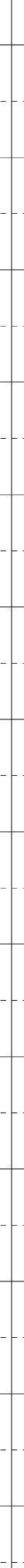
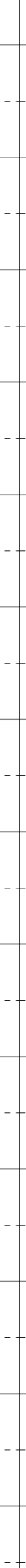
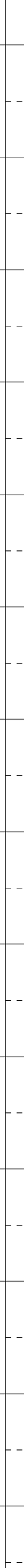
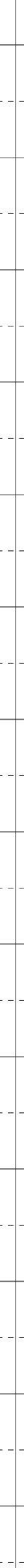
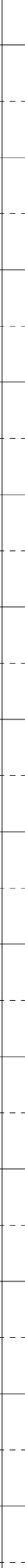
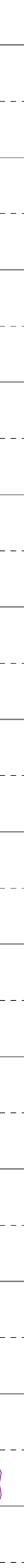
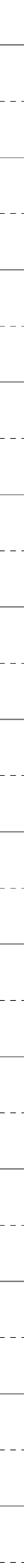
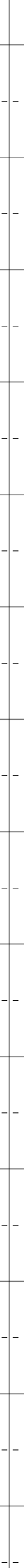
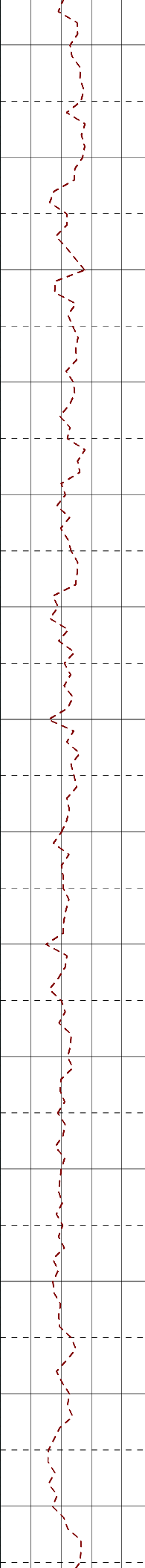
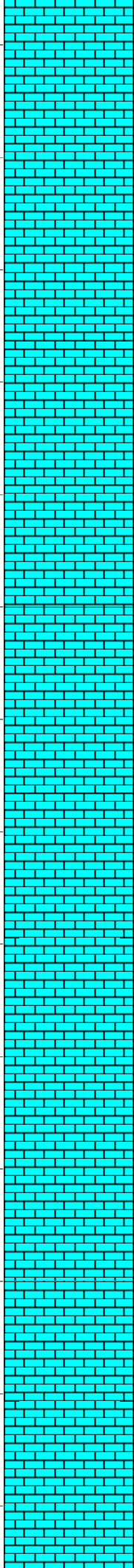
900  
910  
920  
930  
940  
950  
960  
970  
980  
990  
1000  
1010  
1020  
1030

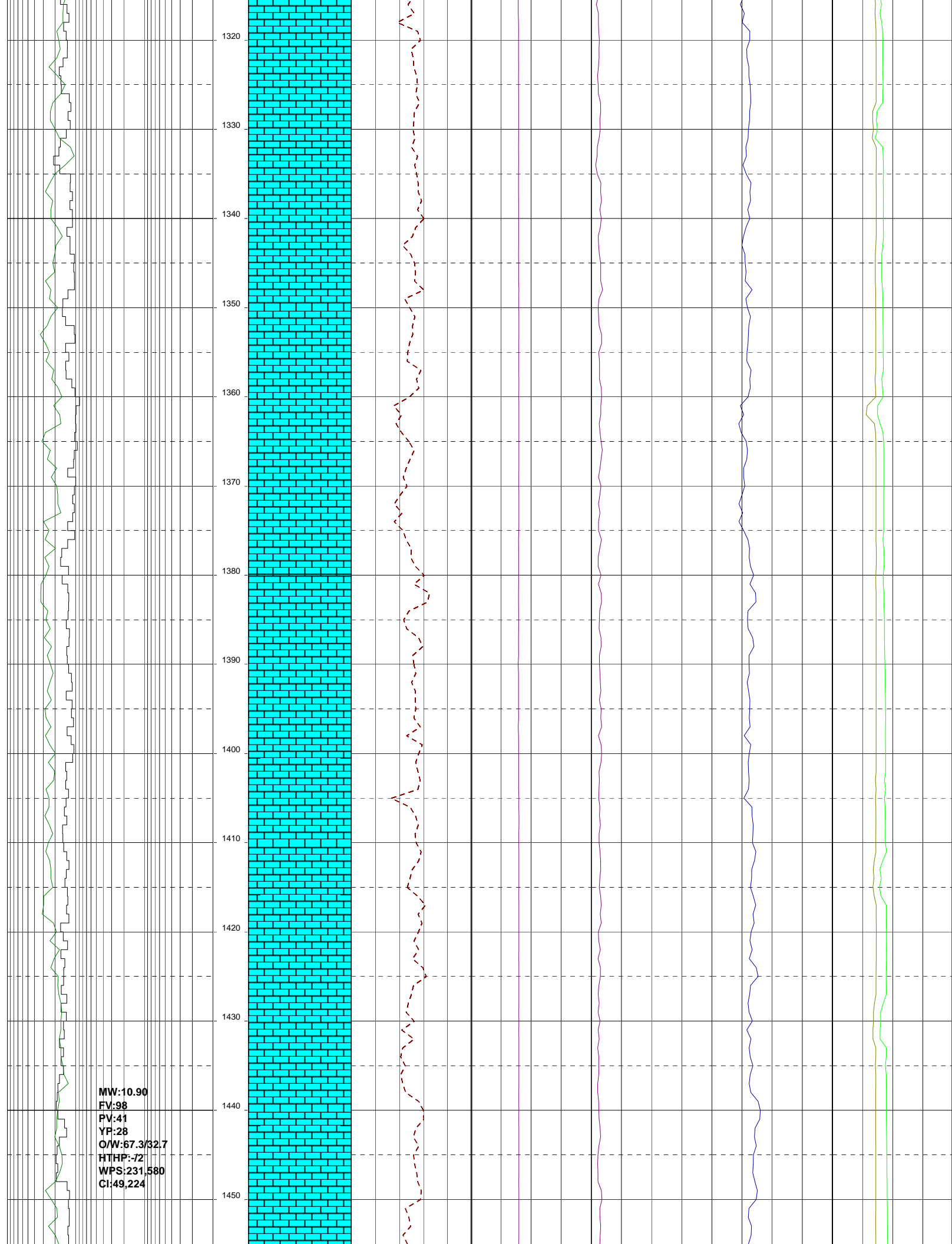


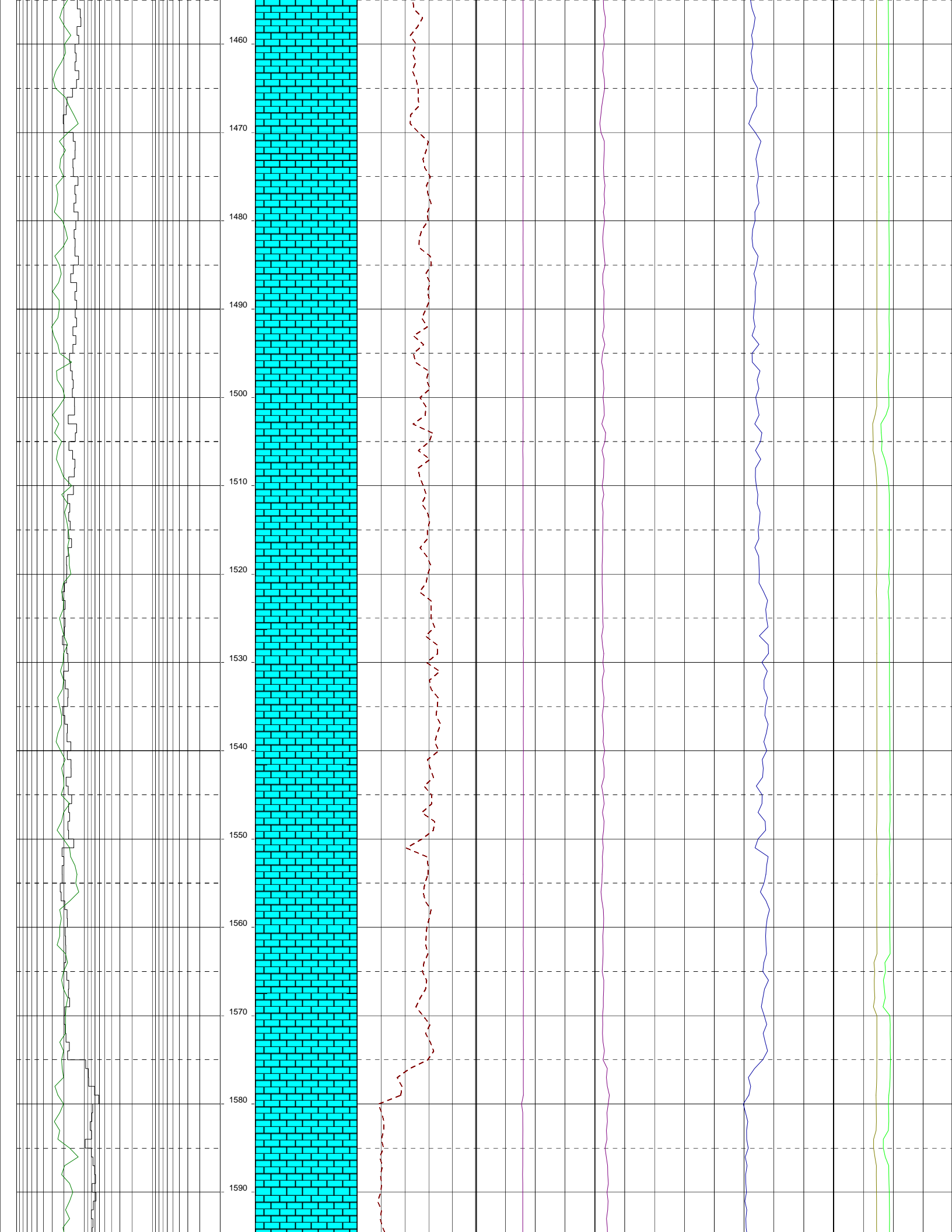


MW:10.55  
FV:90  
PV:37  
YP:22  
O/W:67.6/32.4  
HTHP:-/2  
WPS:240,328  
CI:51,440

1180  
1190  
1200  
1210  
1220  
1230  
1240  
1250  
1260  
1270  
1280  
1290  
1300  
1310

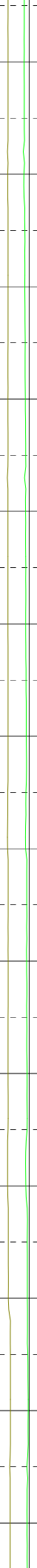
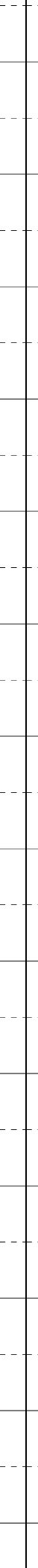
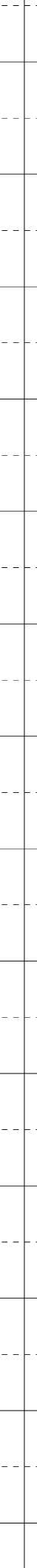
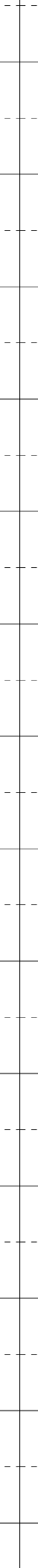
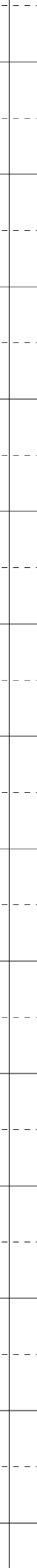
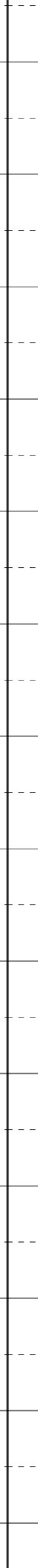
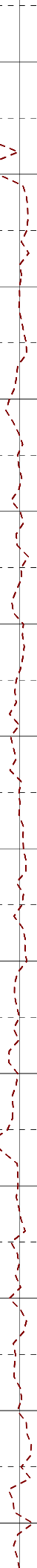
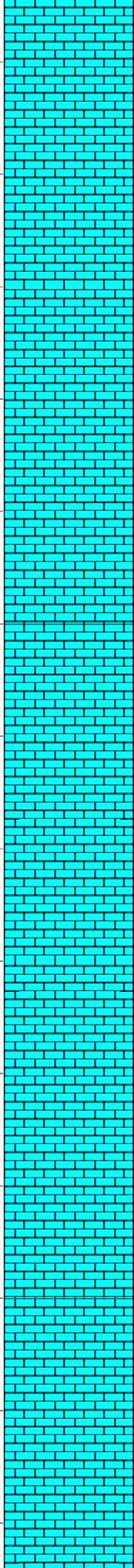






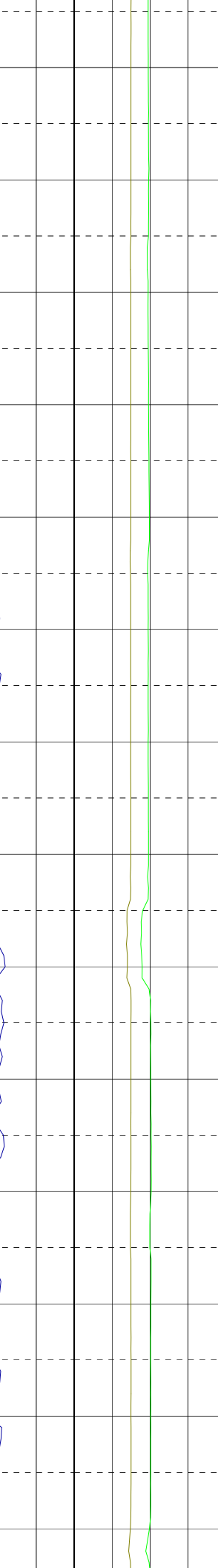
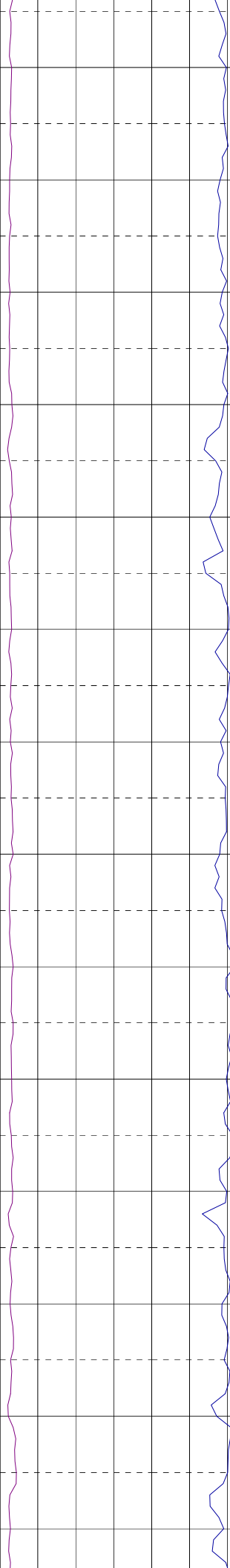
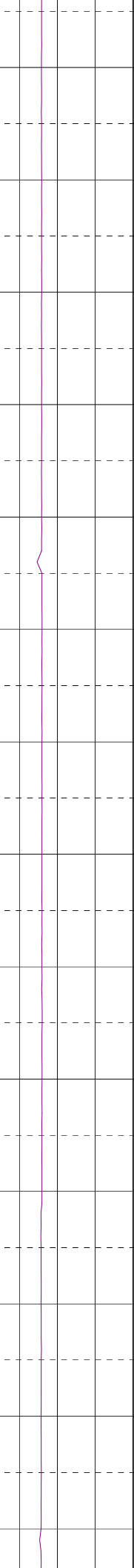
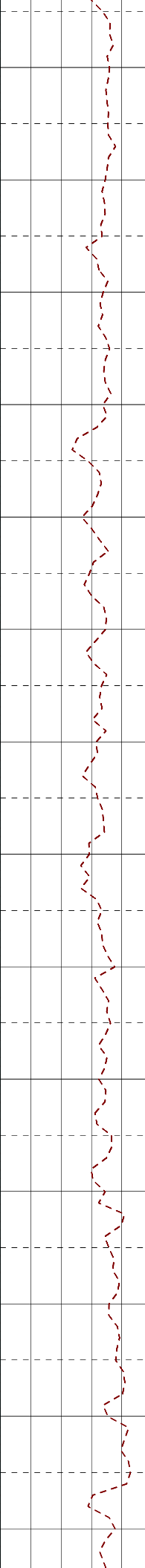
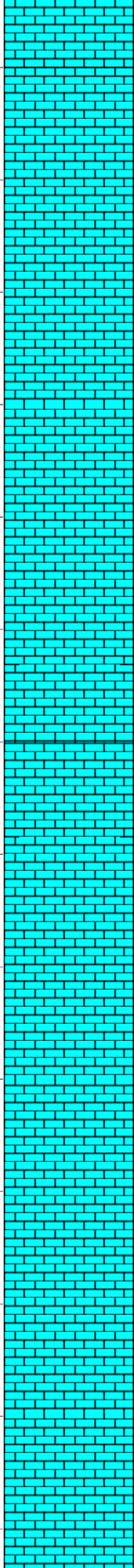
04-12-09

1600  
1610  
1620  
1630  
1640  
1650  
1660  
1670  
1680  
1690  
1700  
1710  
1720  
1730

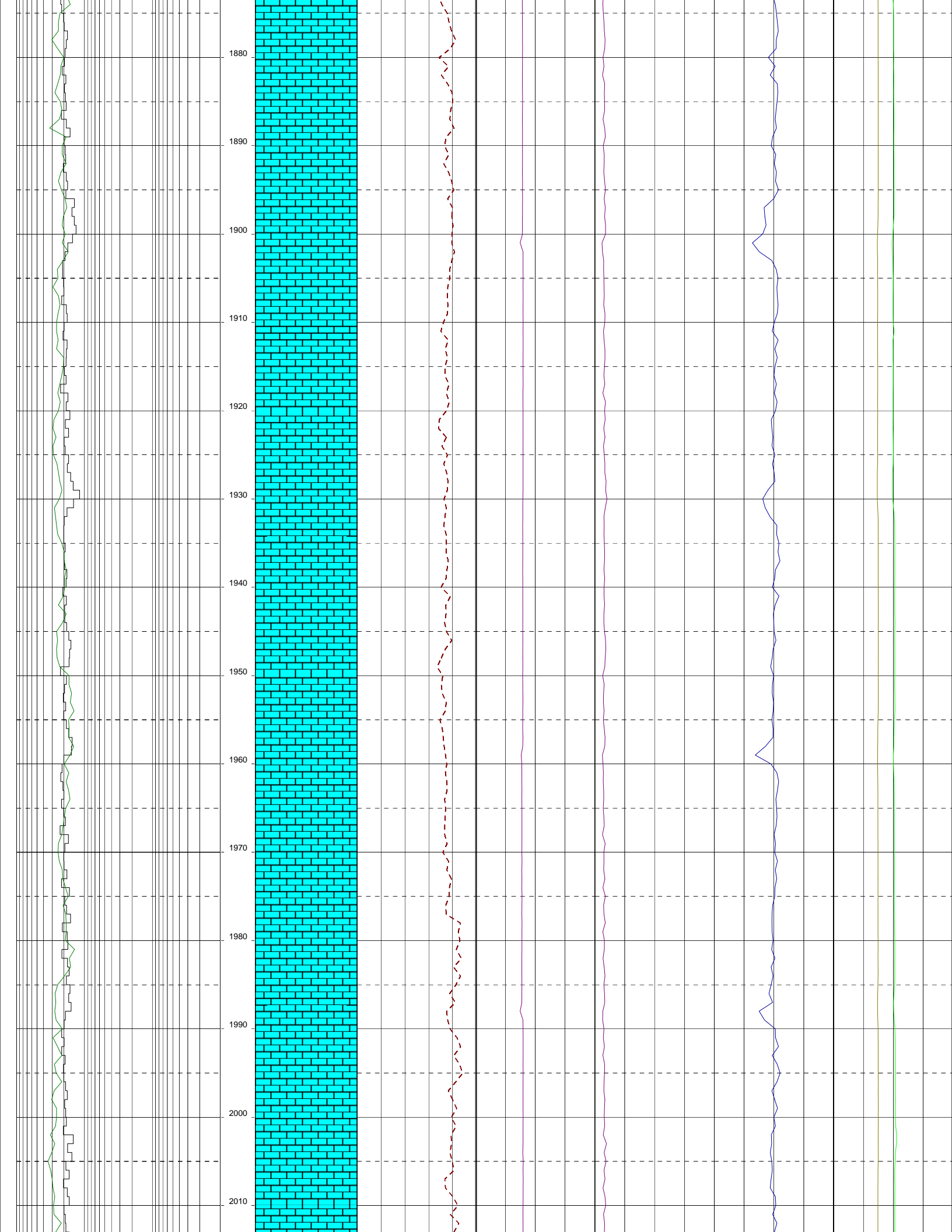


MW:11.15  
FV:103  
PV:42  
YP:30  
O/W:68,1/31.9  
HTHP:-/2  
WPS:238,237  
CI:49,057

1740  
1750  
1760  
1770  
1780  
1790  
1800  
1810  
1820  
1830  
1840  
1850  
1860  
1870

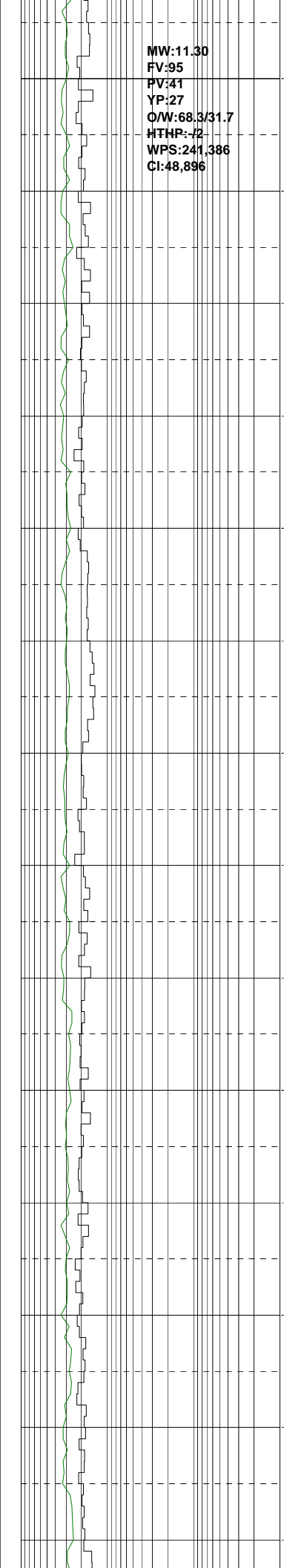
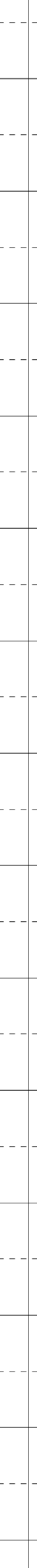
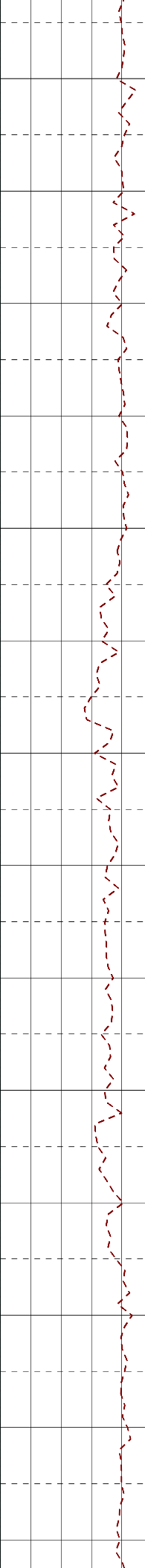
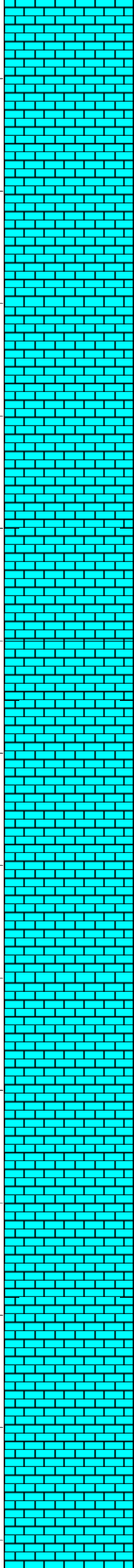


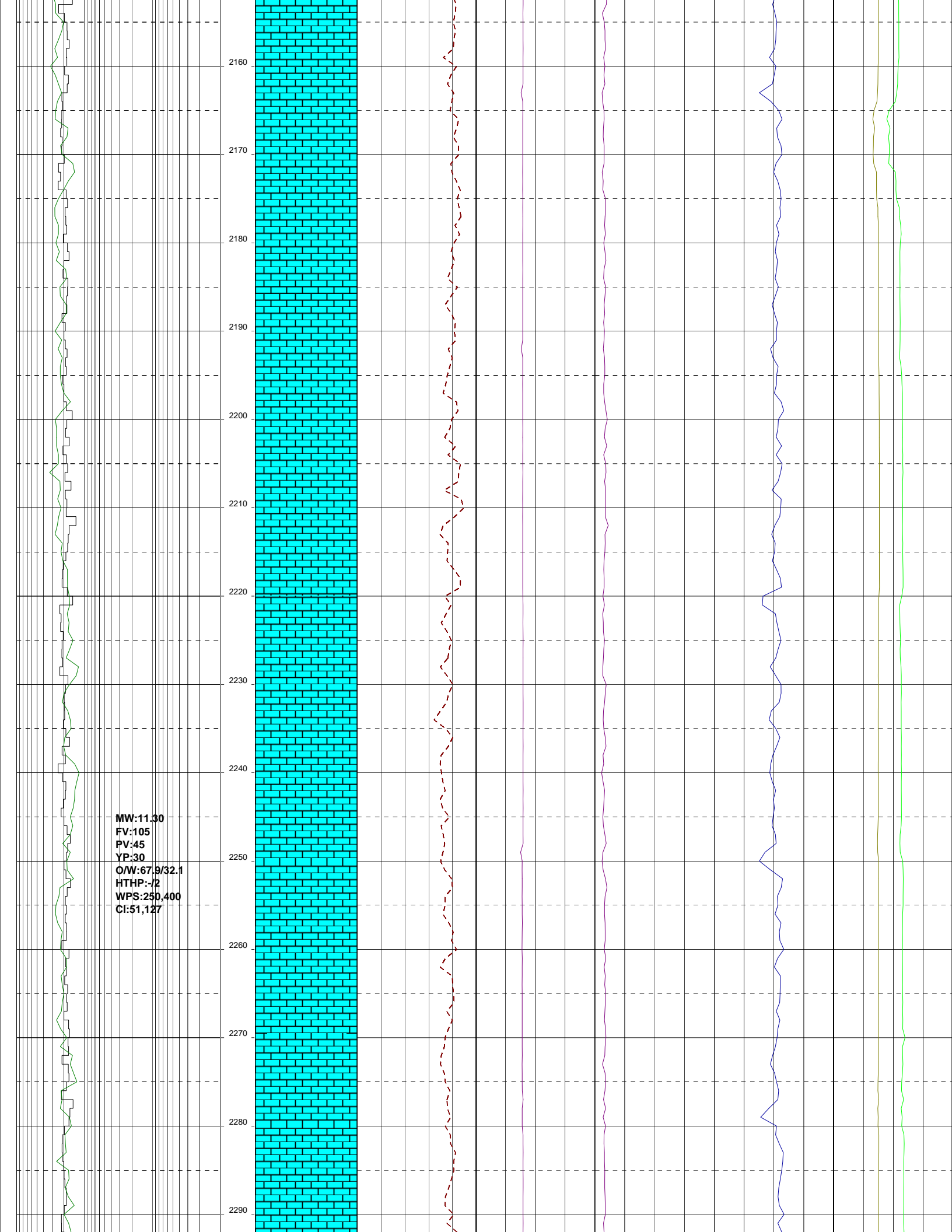


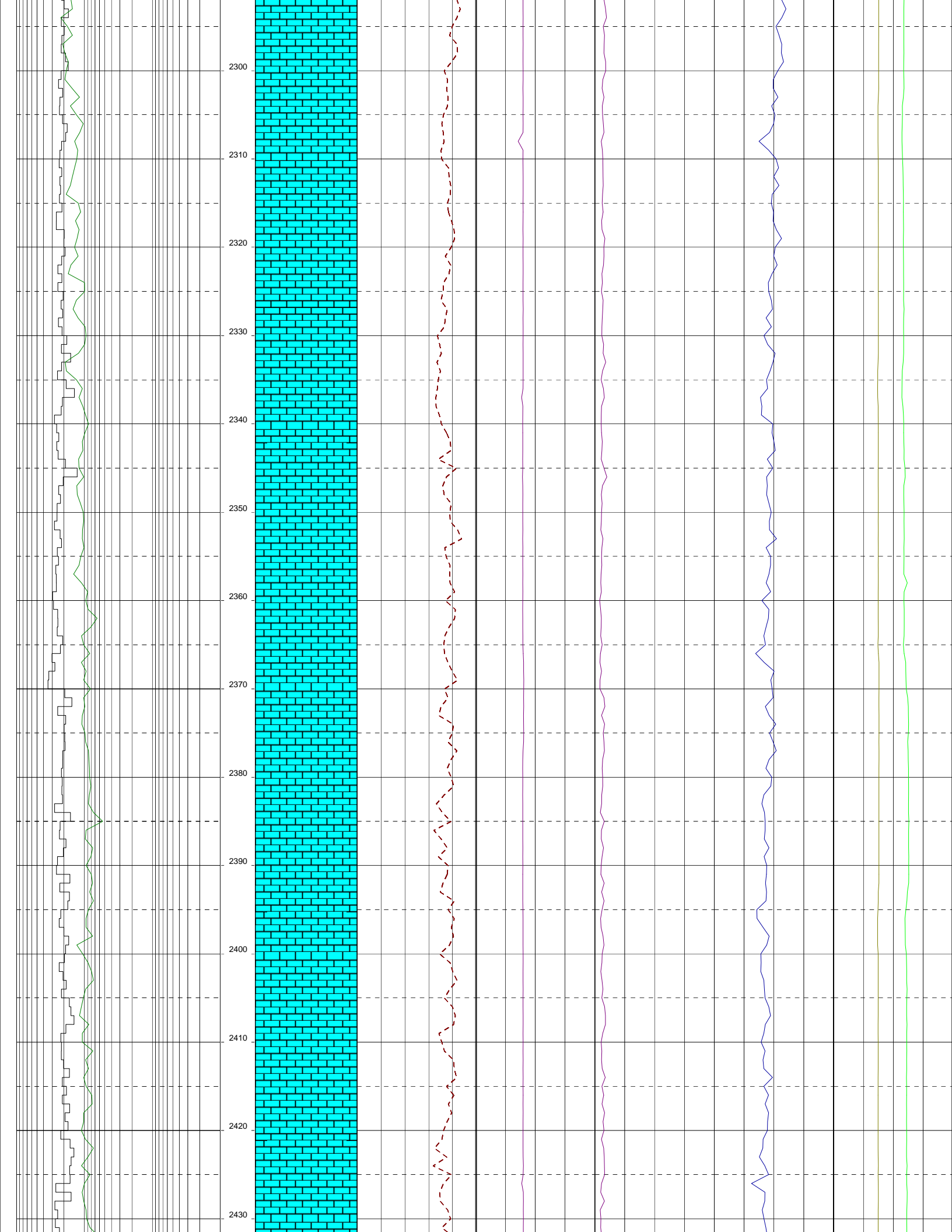


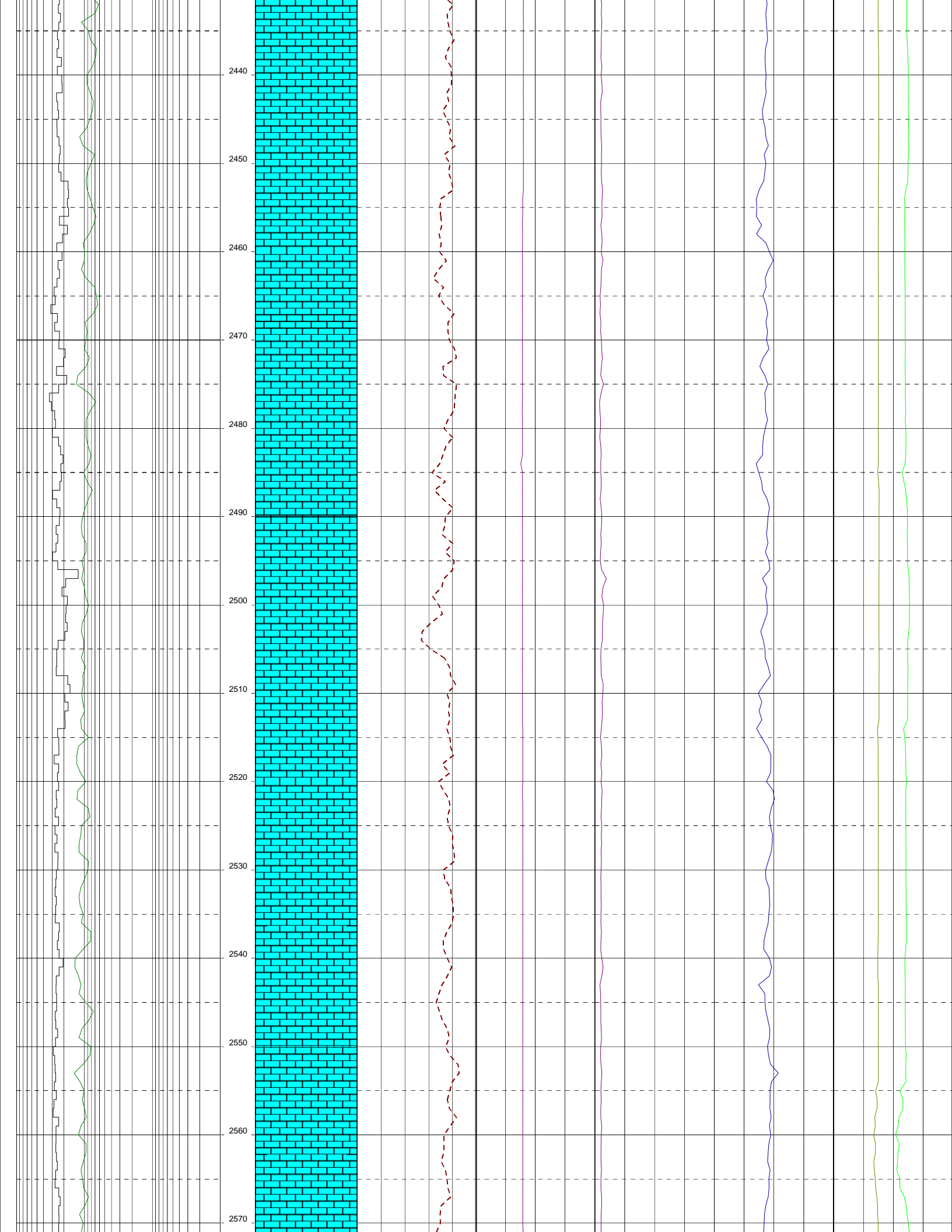
MW:11.30  
FV:95  
PV:41  
YP:27  
O/W:68.3/31.7  
HTHP:-72  
WPS:241,386  
CI:48,896

2020  
2030  
2040  
2050  
2060  
2070  
2080  
2090  
2100  
2110  
2120  
2130  
2140  
2150



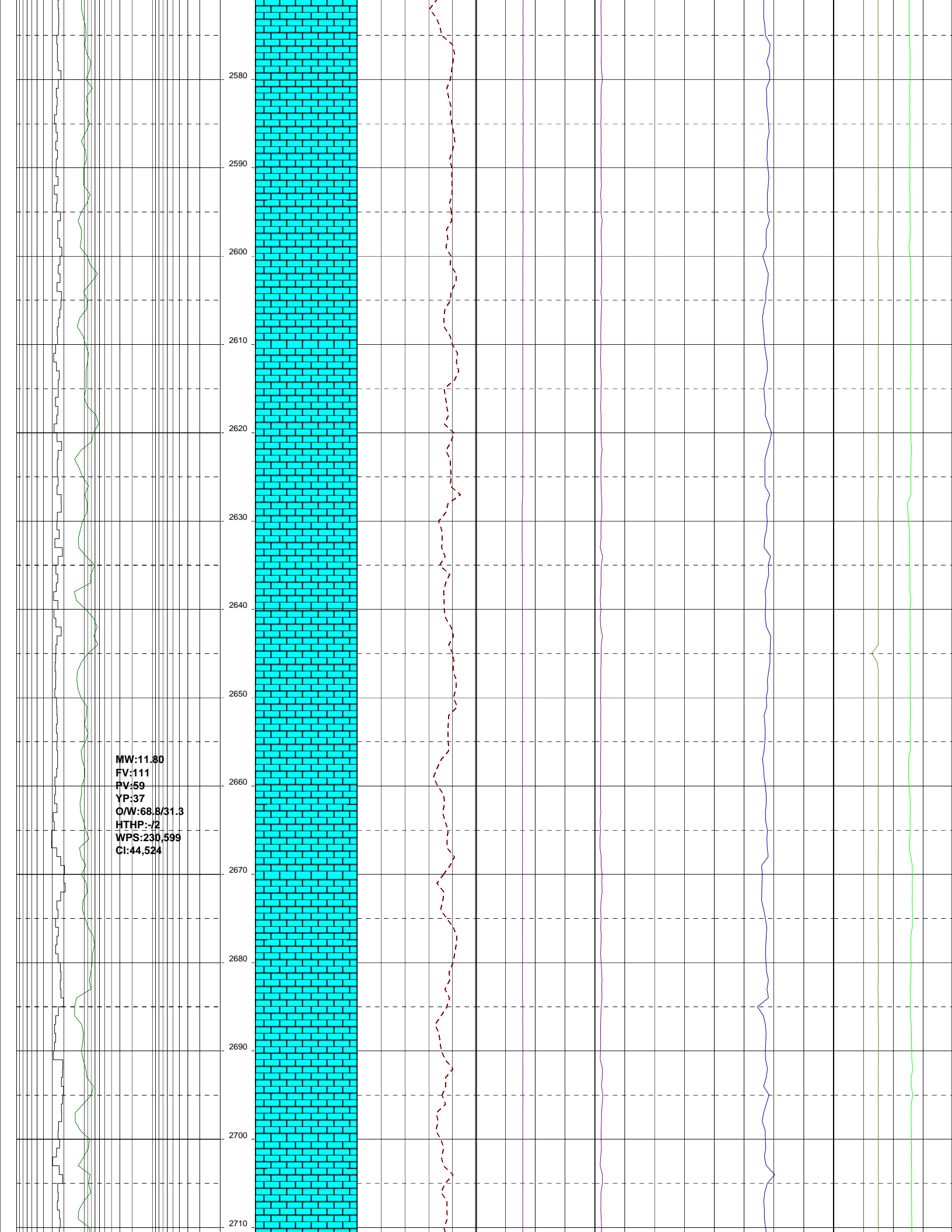


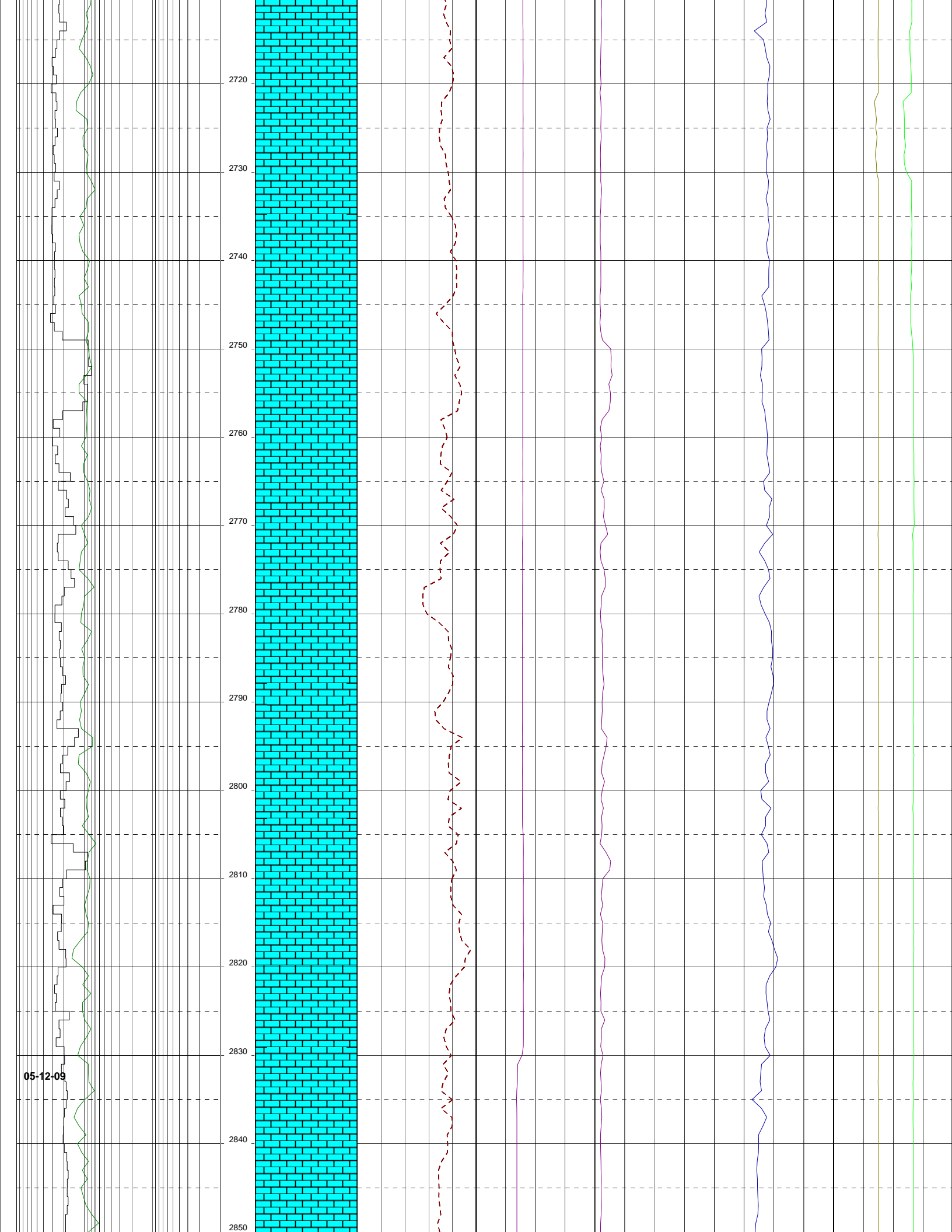




MW:11.80  
FV:111  
PV:59  
YP:37  
O/W:68.8/31.3  
HTHP:-/2  
WPS:230,599  
CI:44,524

2580  
2590  
2600  
2610  
2620  
2630  
2640  
2650  
2660  
2670  
2680  
2690  
2700  
2710





2720

2730

2740

2750

2760

2770

2780

2790

2800

2810

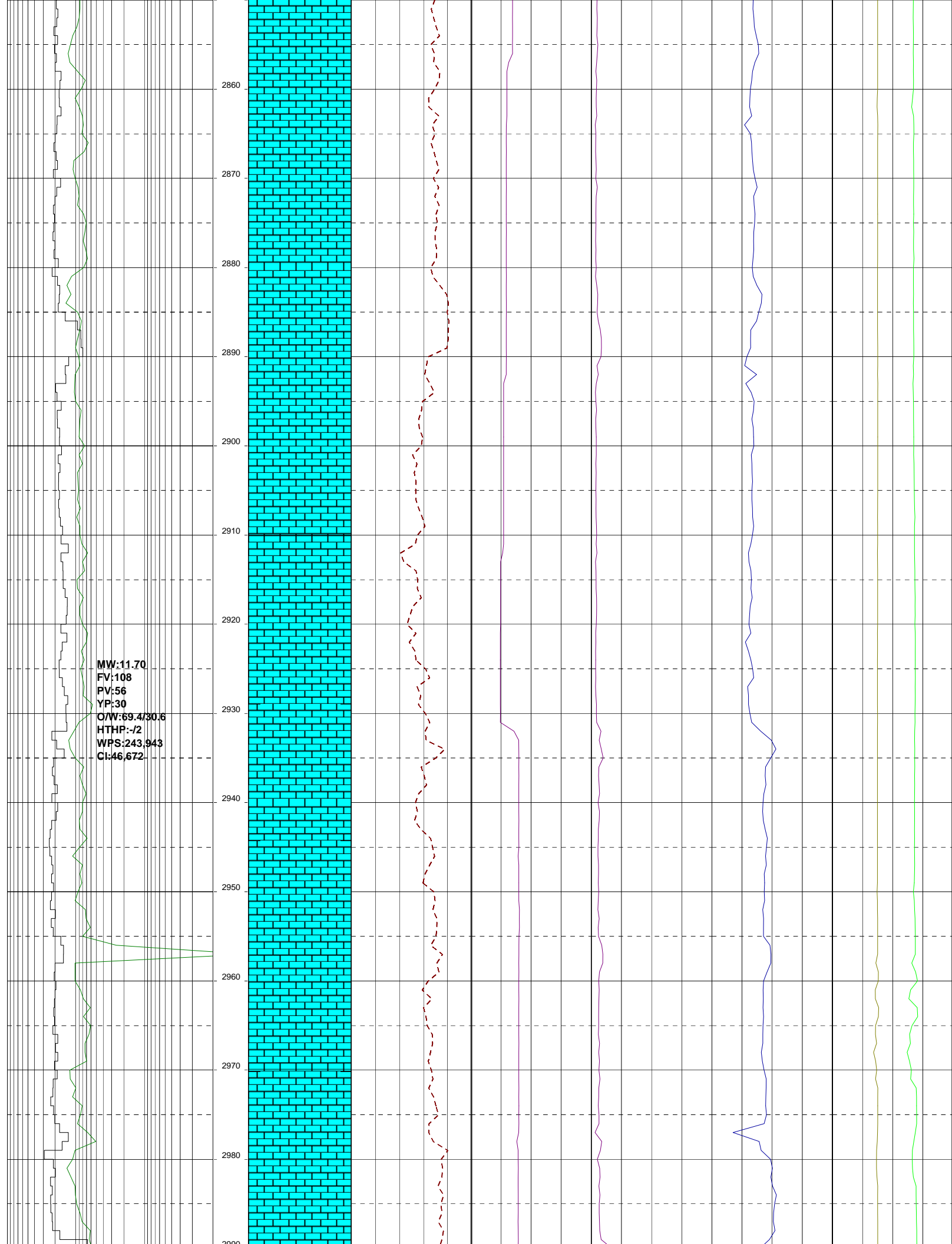
2820

2830

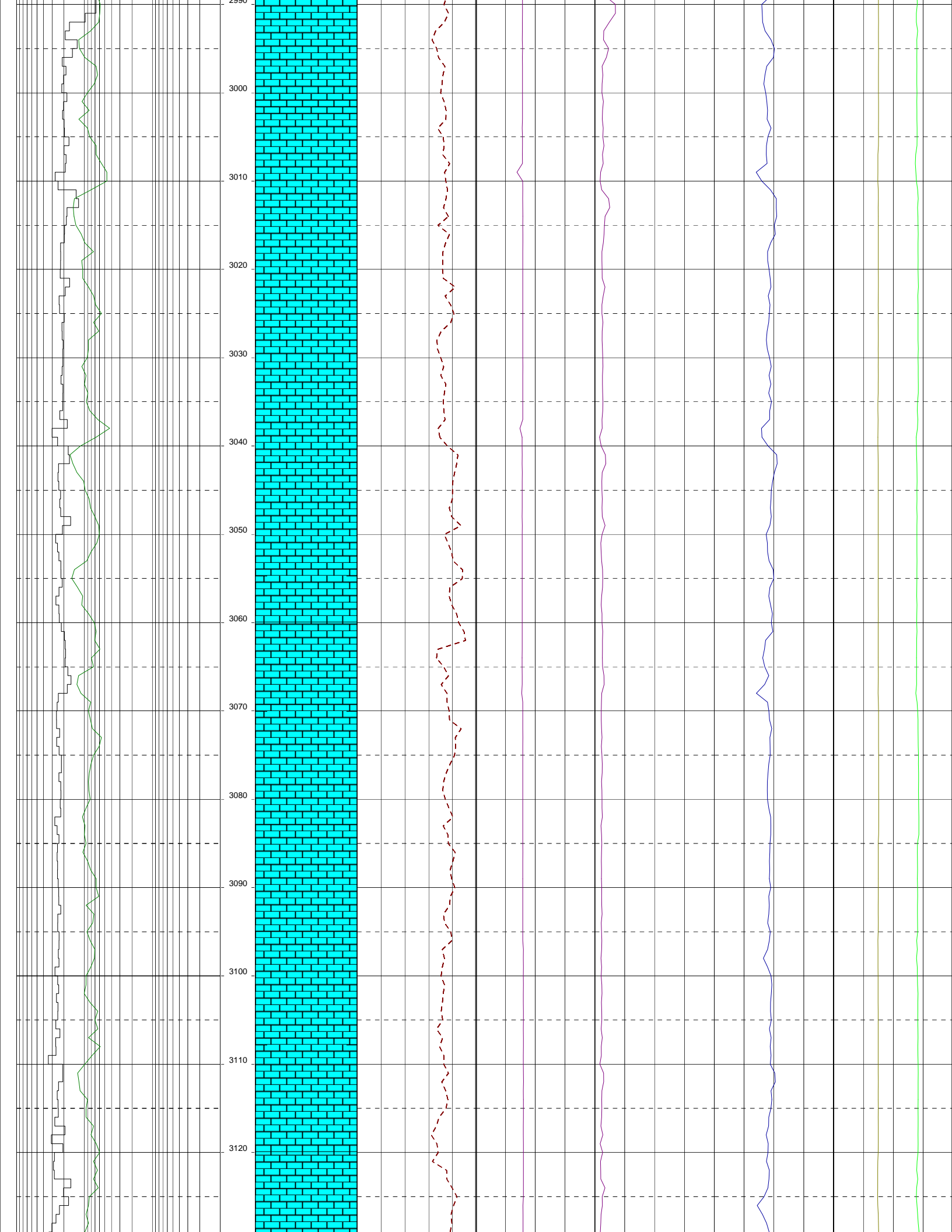
2840

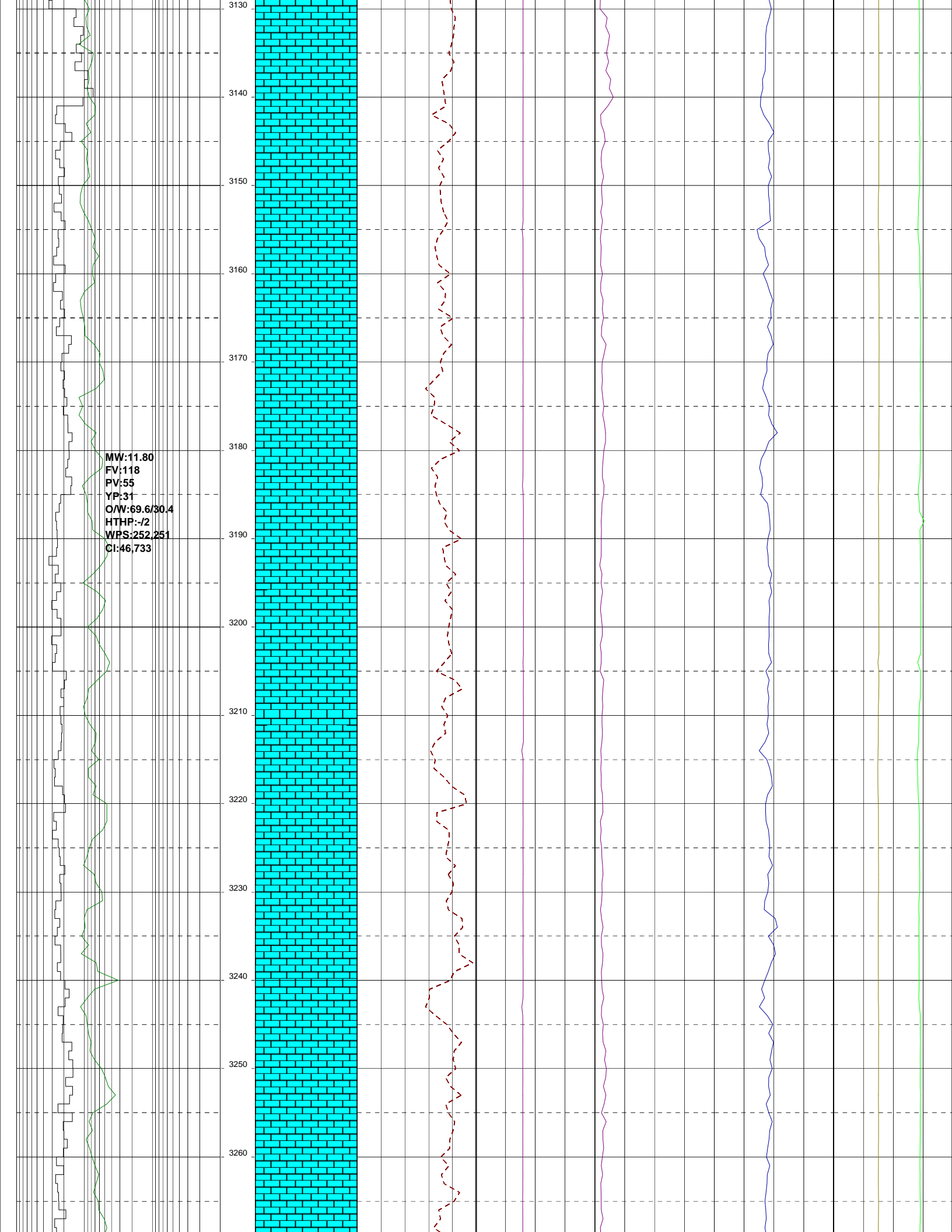
2850

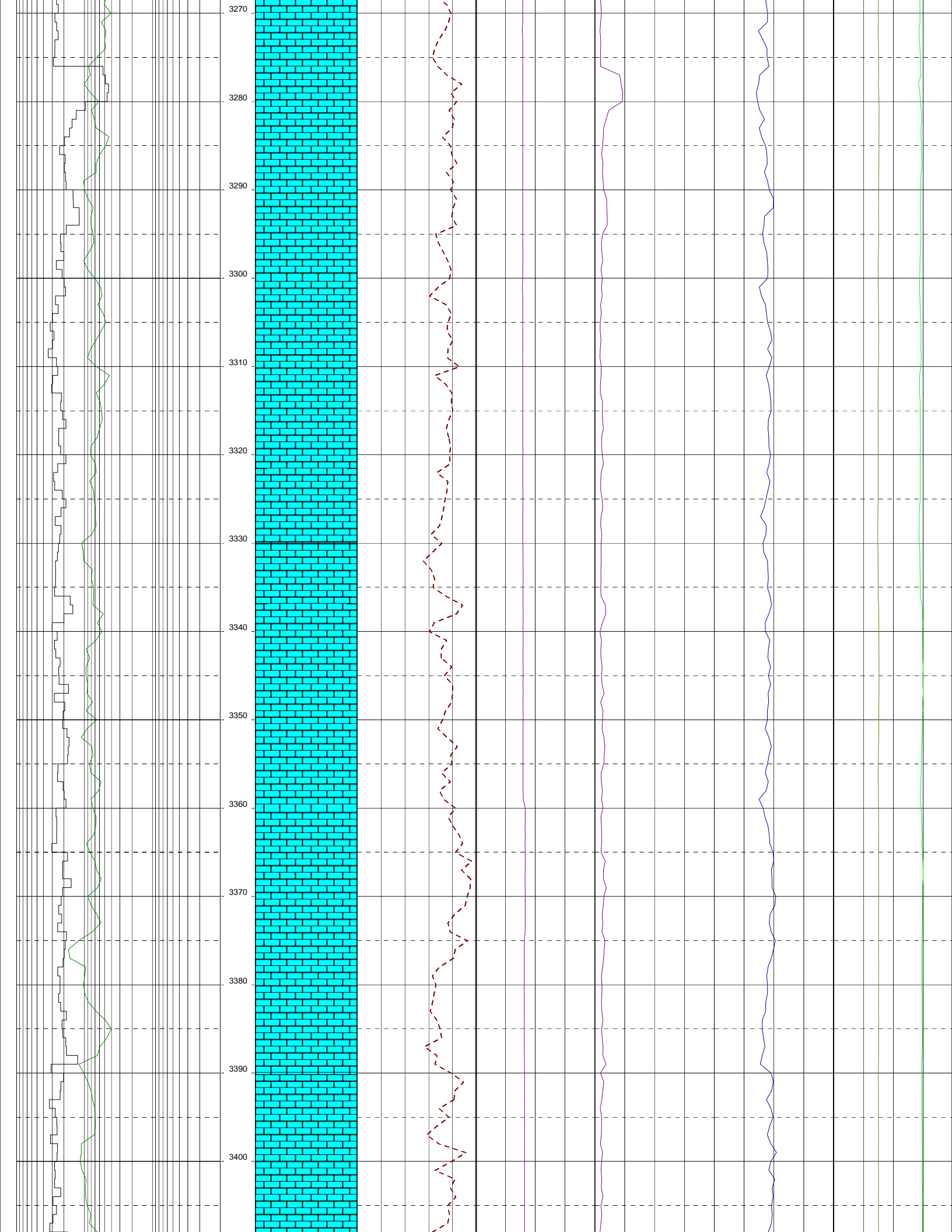
05-12-09

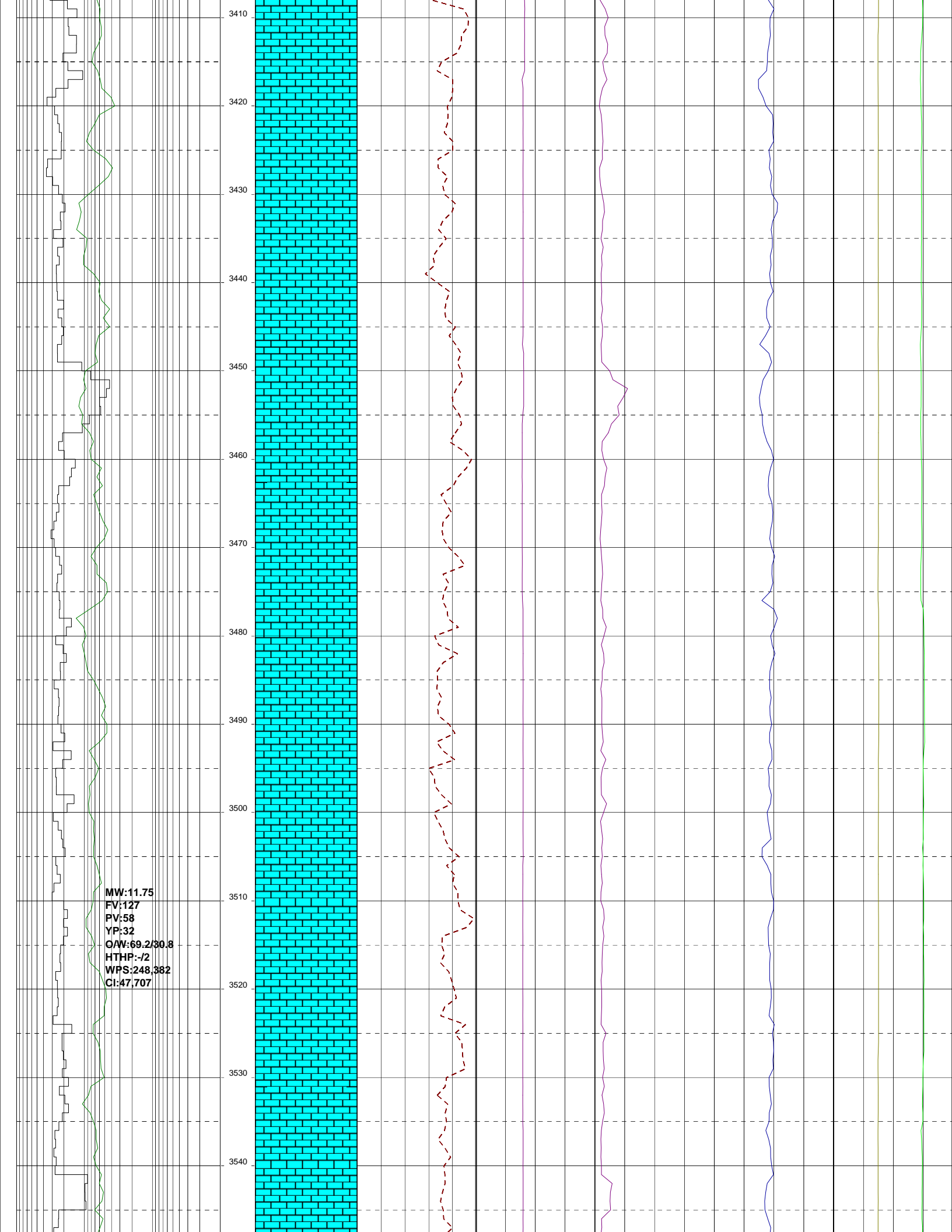


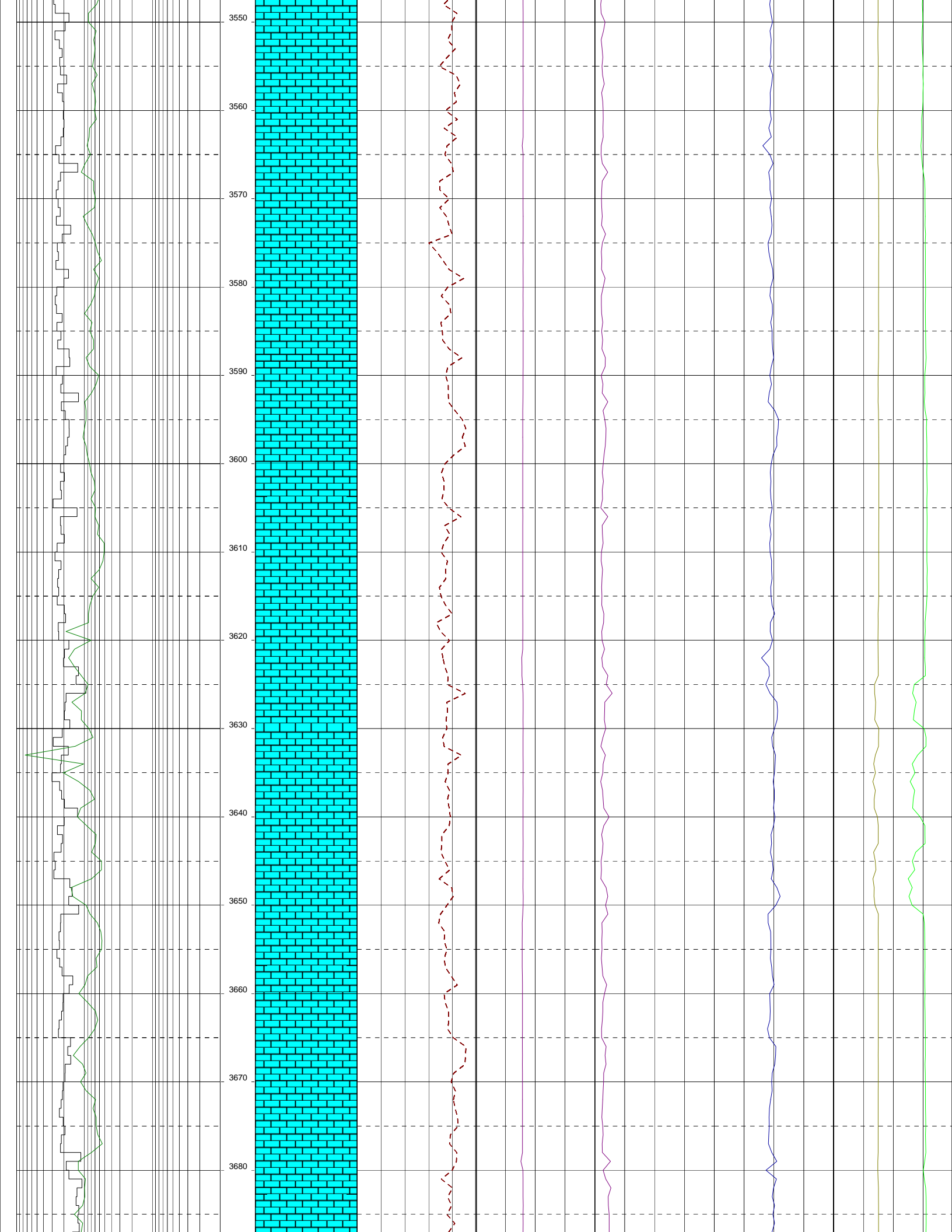


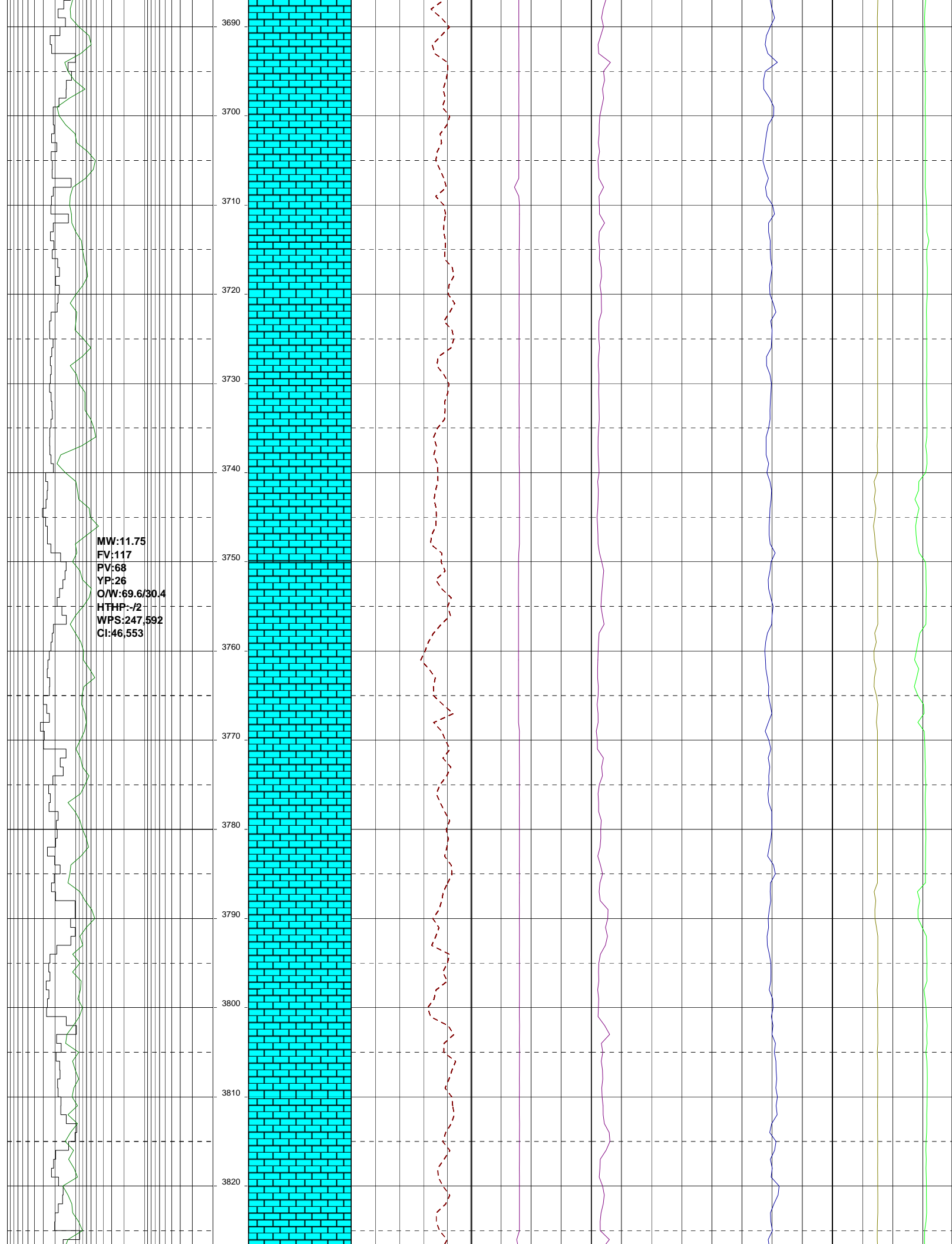












3830  
3840  
3850  
3860  
3870  
3880  
3890  
3900  
3910  
3920  
3930  
3940  
3950  
3960

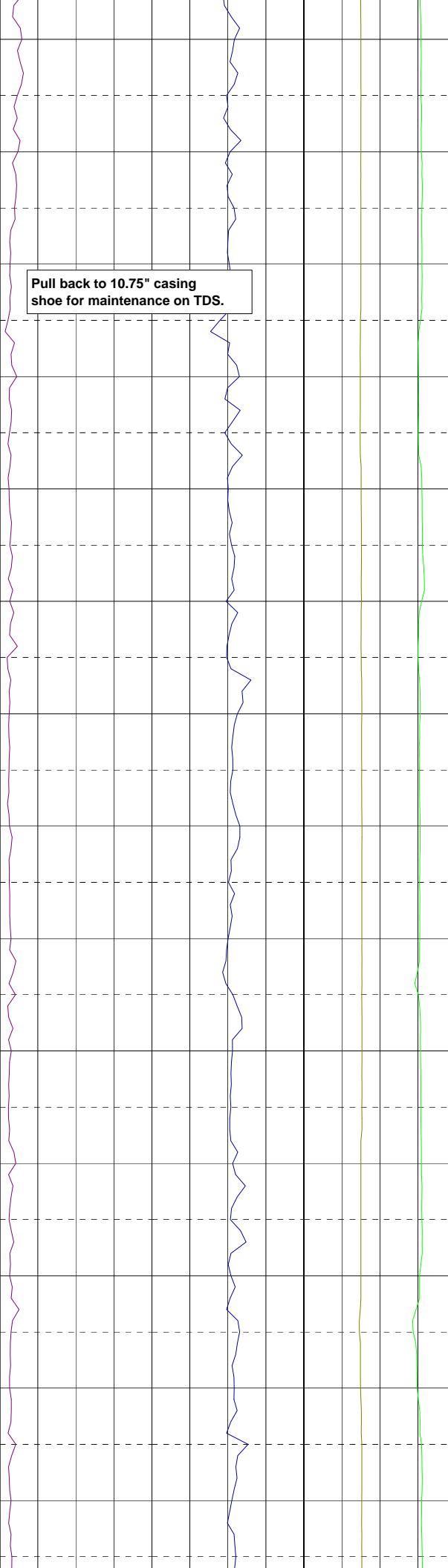
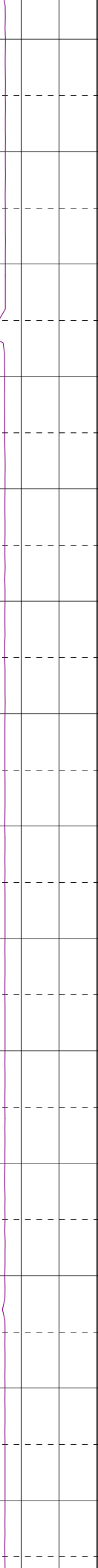
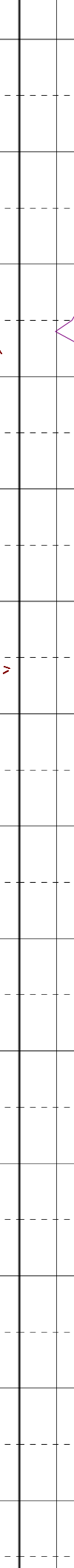
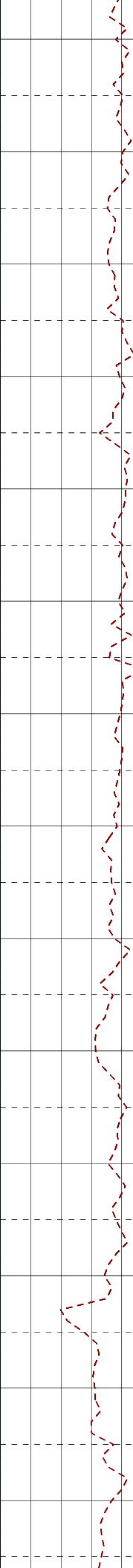
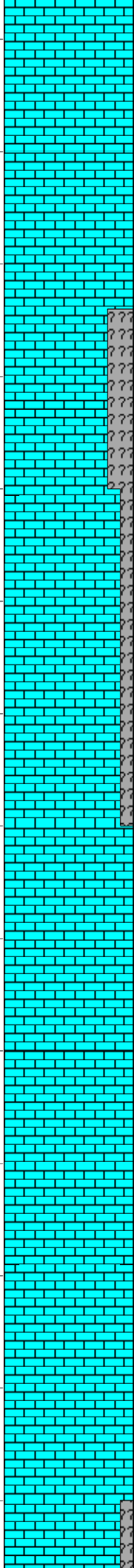
06-12-09

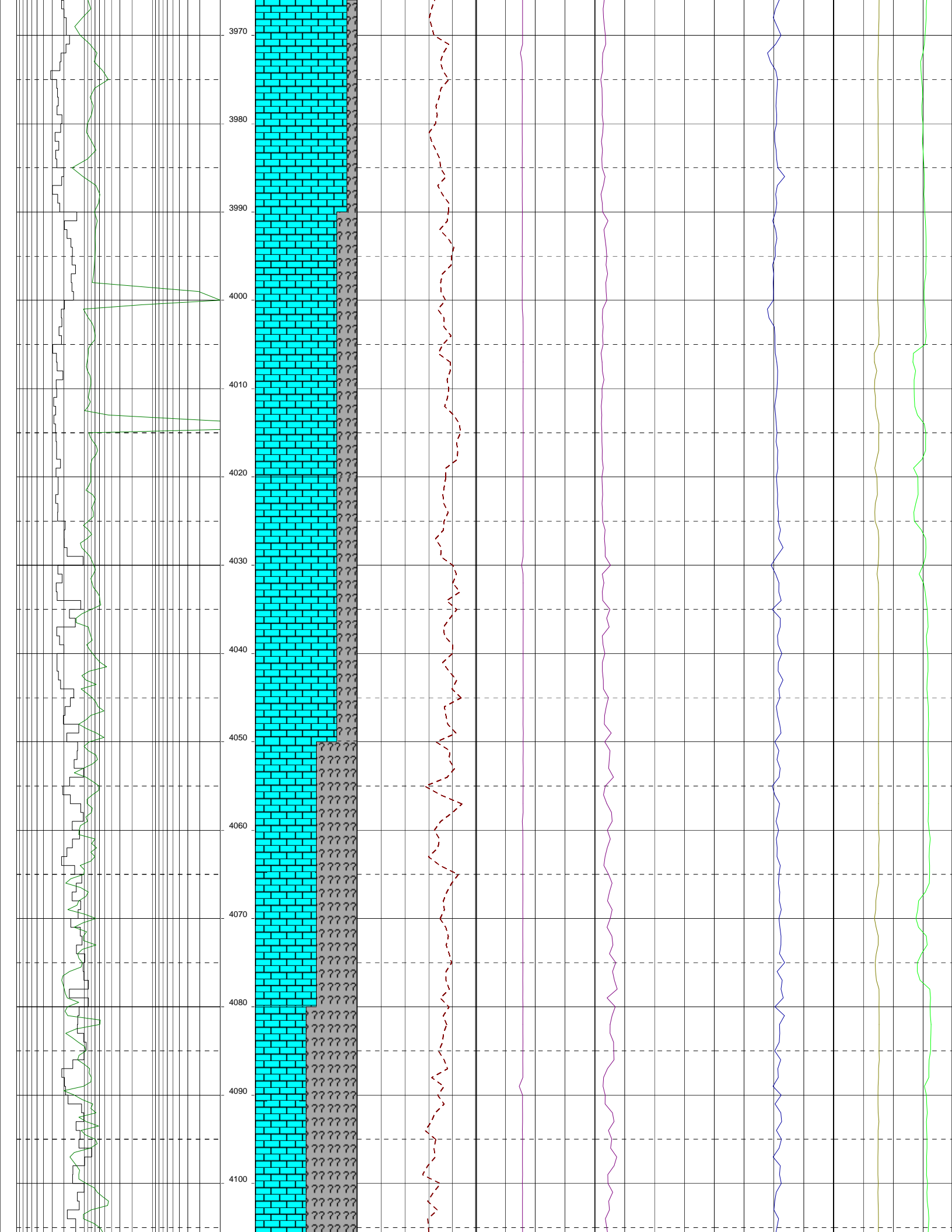
07-12-09

MW:11.70  
FV:105  
PV:55  
YP:31  
O/W:70.3/29.7  
HTHP:-/2  
WPS:256,588  
CI:47,595

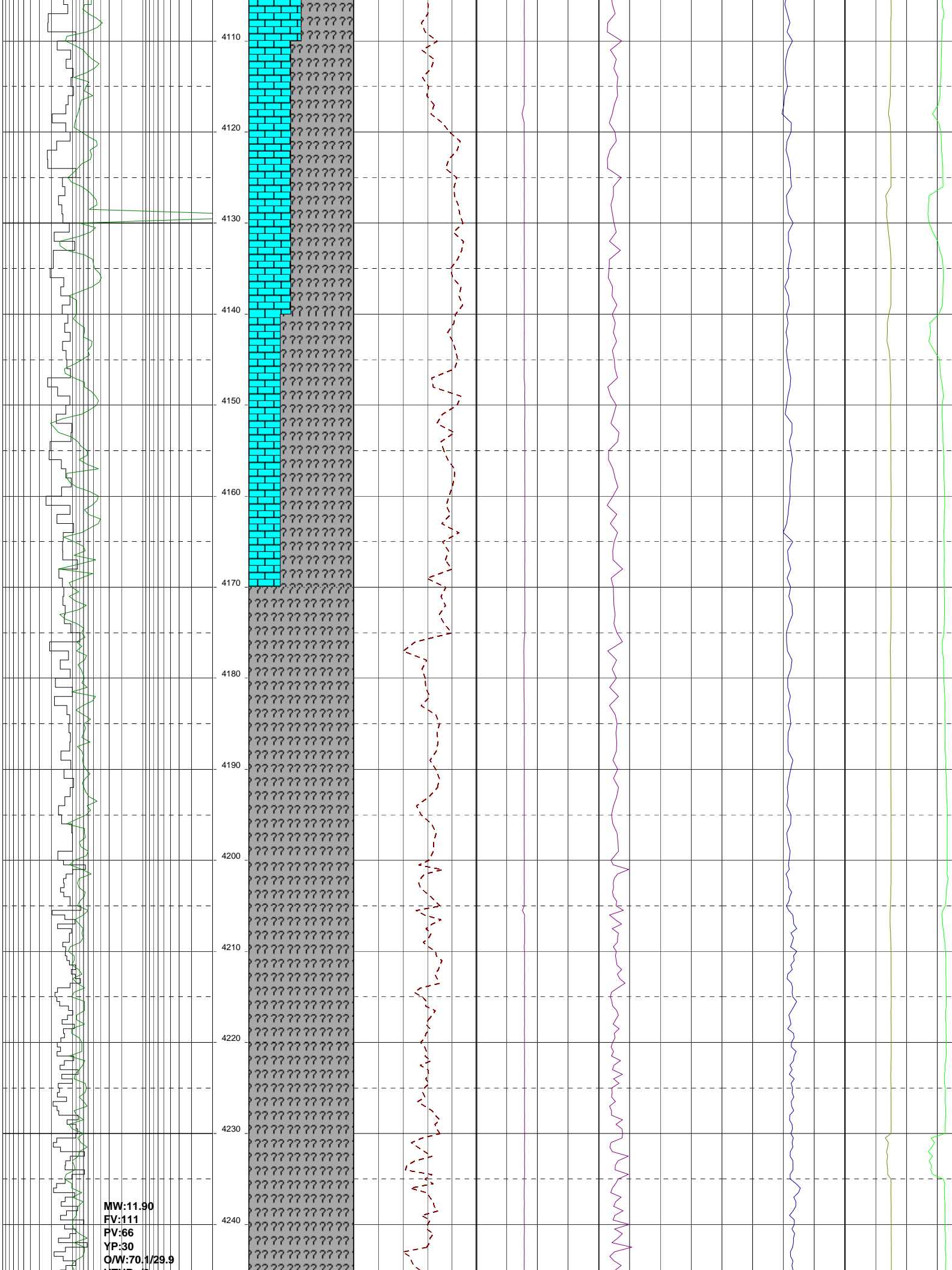
MW:11.65  
FV:104  
PV:56  
YP:26  
O/W:69.6/30.4  
HTHP:-/2  
WPS:257,021  
CI:48,707

Pull back to 10.75" casing shoe for maintenance on TDS.









4110  
4120  
4130  
4140  
4150  
4160  
4170  
4180  
4190  
4200  
4210  
4220  
4230  
4240

MW:11.90  
FV:111  
PV:66  
YP:30  
Q/W:70.1/29.9





